



1919 West Lone Cactus Drive Phoenix, AZ 85027

Phone 623-492-9200 Fax 623-492-9921

www.ibizcorp.com

KeySync Keyboard Manual for Windows CE & Pocket PC

Introduction

Thank you for choosing iBIZ Technology Corporation's KeySync Keyboard. The KeySync Keyboard is a standard layout keyboard designed to provide the user a data input alternative to Jot power writing software. The KeySync is compatible with Windows CE devices including the Casio Cassiopeia, Compaq Aero, Everex Freestyle, HP Jornada, Philips Nino and others. The KeySync is easy to travel with, great for desktop use and utilizes a durable mechanical keyswitch system for a "real keyboard" feel. The KeySync will easily connect to your handheld with the serial cable from a cradle or travel cable.

The KeySync Keyboard integrates the look and function of a standard keyboard with shortcuts in most applications; virtually eliminating the need for stylus input. The KeySync is self-powered by 3 AAA batteries (included).

Features:

- Compatible with Win CE models (PPC, HPC, etc.).
- 6 User-defined function keys
- Combinations of "Fn"/"Option" and numerical keys from 0 to 9 can also be defined.
- With 3 AAA batteries the keyboard doesn't drain the handheld device.
- Power On/Off switch.
- Battery life:
 - Standby ——— Alkaline approx. 12000hrs
 - Operating ——— 400 hrs
- Dimension : 10 1/2" x 4 1/2" x 1 1/4" (L x W x H)
- Weight : 1 pound

Drivers available: (Diskette included)

- U-Key MIPS
- U-Key SH3

Installation

To start using this keyboard, a software program should be loaded into the application menu of your Windows CE device. MIPS and SH3 are the two main types of processors for these devices. Please find the correct processor type before your installation. **This information can be found by tapping "Start", then "Settings", then "System", then "About" on your handheld, or from the user's manual of your handheld device.** For installation:

1. Place the handheld device into the cradle and plug the cable from the handheld device cradle into your PC. Be sure to insert the KeySync disk into floppy drive.
2. On your desktop open the Windows Explorer. You can do this by clicking on "Start", "Programs", then "Windows Explorer". Once this window is open, scroll down the left column until you find the "Mobile Devices" icon. Double-click the "Mobile Devices" icon. Now you will double-click on the "Palm Size_PC" icon for Win CE, after this has opened you will double-click on the "Windows" folder.
3. Now move the entire window to the right hand side of the screen leaving the "Windows" folder open.
4. Double-click on "My Computer" icon on desktop, then Double-click on the "3 1/2 Floppy" icon.
5. Choose the driver file that matches your handheld device processor type (as described above), then drag and drop the correct driver file from the "A:Drive" to the "Start Menu" folder under the "Mobile Devices" window.
6. The driver is now installed and will show up under the "Start Menu" on your Windows CE handheld.
- 7.

***Please see "Driver Installation Screen Shot" on back for visualization.**

Technical Support:
e-mail: keysync@ibizcorp.com
1-800-234-0707
www.ibizcorp.com

Now that you have finished the installation, you need to configure the Ukey software, please refer to the following steps:

1. Connect the cradle cable with the KeySync keyboard.
2. The On/Off switch located on the upper left hand corner of the keyboard should be pushed away from you to establish the keyboard in the “On” position.
3. Turn the power on for your handheld device and tap “Ukey” under the “Start” menu list. A Ukey window then pops up with an **OK** and an **X** on the upper-right corner. Tap **OK** to use or tap **X** to quit the driver.

NOTE: In the Ukey window there will be an “Esc key...” button, and a “Hotkeys” button. The “ESC Key” will give you two options to allow your preference on the use of an “Escape” function. The “Hotkeys” can be used to setup shortcuts to your favorite applications.

4. After clicking **OK**, the keyboard’s icon will be displayed in the lower right hand corner of the Windows CE models at all times. When a red “X” appears over the keyboard icon the KeySync is not functional; when no “X” appears the keyboard driver is functional. Tapping the icon once will turn the driver on and off accordingly.

***Reminder:** Turn off the KeySync driver on your handheld device before connecting to the PC since both your PC and the KeySync use the same handheld port to function.

How To Execute The Function Keys:

F1- F6 : Open up any application that utilizes text entry. When you press any key of F1- F6 the text you had programmed earlier will now appear.

Special keyboard functions

Utilize the Fn, Ctrl, Option, Alt, Tab, Shift, Return, Backspace and Arrow keys in combination with other keys to perform various functions. Some practice in each application will familiarize you with individual functions.

Shortcut examples:

“Ctrl” + C = Copy
“Ctrl” + V = Paste
“Ctrl” + X = Cut
“Ctrl” + Z = Undo
“Ctrl” + N = New

Hotkeys

10 “Hotkeys” can be programmed to open your favorite applications. This is executed by holding down the “Option” key + any number key (0-9).

How to Program the “Hotkeys”

1. Go into the “Hotkeys” by tapping “Start”, “Ukey”, “Hotkeys”.
2. You will now see predefined keys for your most common application.
3. By tapping on the screen highlight the option combination you would like to change.
4. Once highlighted select whether you would like to program it for an application or text by tapping next to “App” or “Text” accordingly.
5. Now tap on the down arrow just above the “Text” button, and find the application you would like program.
6. For text, just enter in your desired text in the box above “Browse”.
7. Repeat these steps to program all the “Hotkeys”.

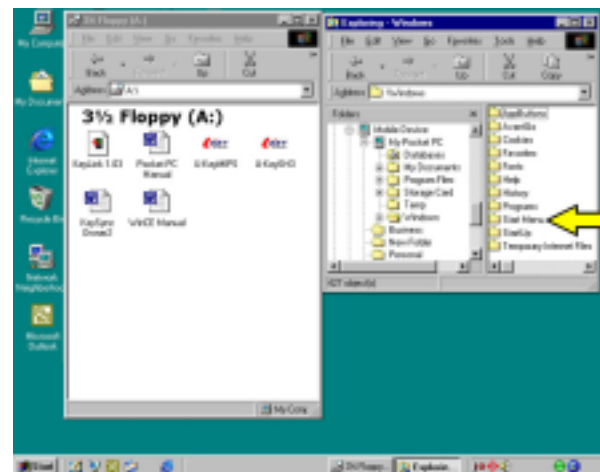
6 User-defined function keys from F1 to F6 provide you easy access to programmed text. (Up to 30 letters/keys can be used for definition, such as letters, symbols, and numbers, etc. For example: E-mail, Add, Tel, etc.)

How To Program The Function keys:

1. Press “Fn” and “Option” & hold down both keys, then press any function key (F1-F6), release the function key first, then release “Fn” and “Option.” Status of definition can now be inserted.
2. Type in any text you want. (maximum of 30 letters/keys)
3. When you are finished, press “Fn” key for saving definition.

***Note-** The “Fn” keys can only be programmed for text entry.

Driver Installation Screen Shot



Pocket PC and Windows CE are trademarks of Microsoft Corporation. KeySync is a trademark of iBIZ Technology Corporation.